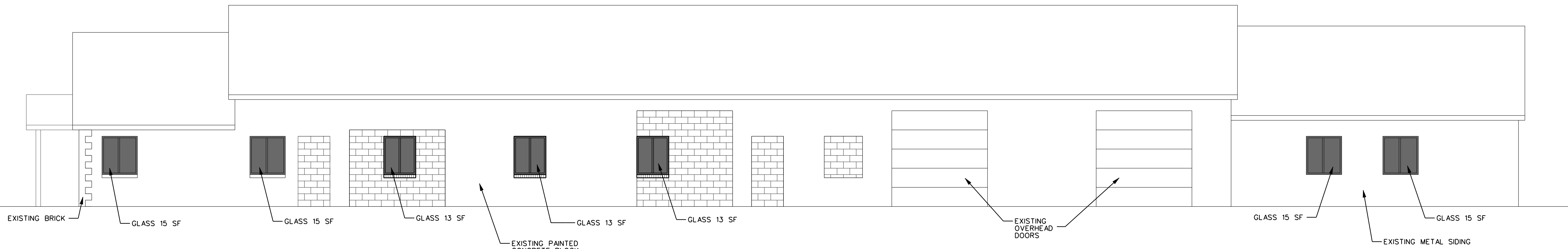




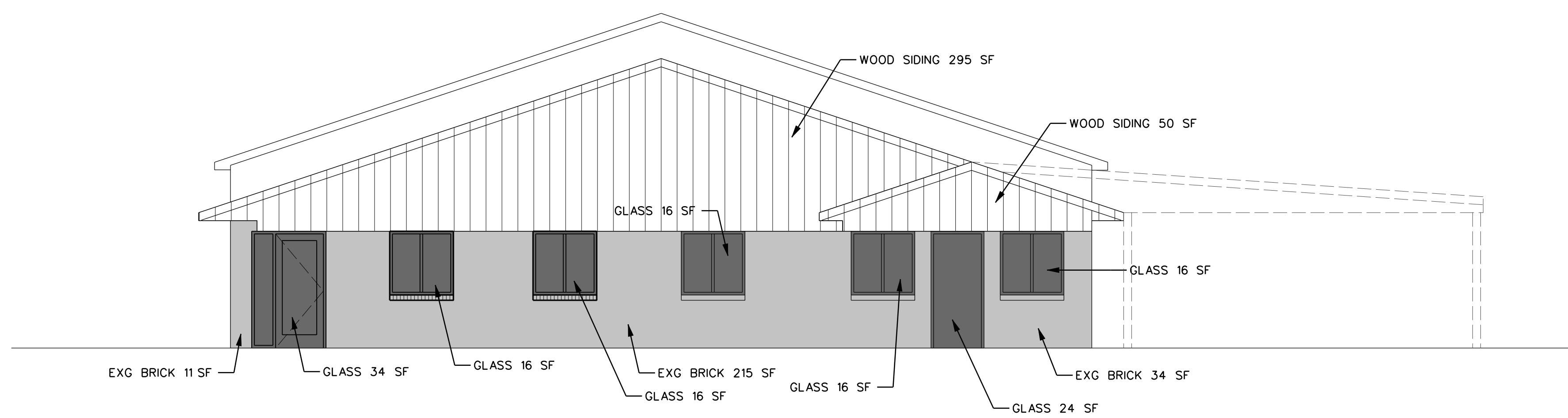
Architecture ■ Engineering ■ Planning
 PO Box 561
 Belmont, MI 49306
 Telephone: 616.454.1398
 www.thedesignforum.com



TOTAL MATERIAL AREA • 1562 SF
 TOTAL WINDOW AREA • 99 SF
 EAST FACADE CONTAINS 6 PERCENT WINDOW AREA

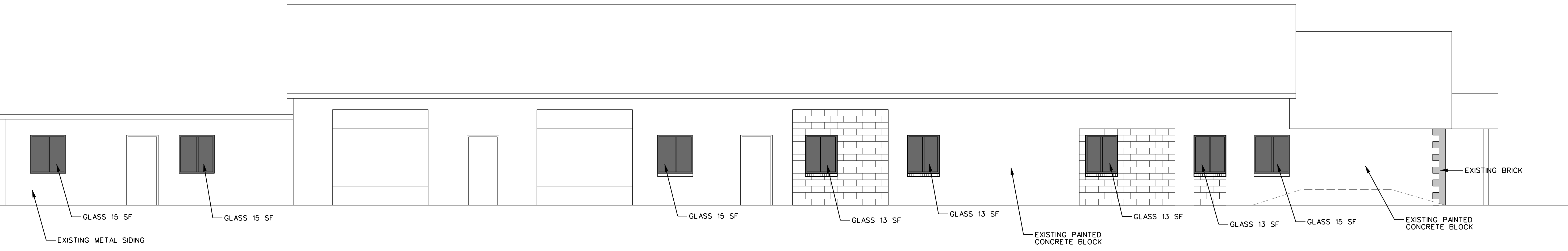
NOTE: ALL NEW EXTERIOR WINDOWS TO BE ALUM STOREFRONT IN FINISH TO MATCH EXG. WINDOWS TO BE FIXED WITH SIMULATED VERTICAL APPLIED MULLION TO REPLICATE EXG WINDOWS

3 WEST ELEVATION
 A2.1 AREA CALCULATIONS SCALE: 3/16" = 1'-0"



TOTAL MATERIAL AREA • 743 SF
 TOTAL WINDOW AREA • 138 SF
 FRONT FACADE CONTAINS 19 PERCENT WINDOW AREA

2 NORTH ELEVATION
 A2.1 AREA CALCULATIONS SCALE: 3/16" = 1'-0"



TOTAL MATERIAL AREA • 1562 SF
 TOTAL WINDOW AREA • 112 SF
 EAST FACADE CONTAINS 7 PERCENT WINDOW AREA

1 EAST ELEVATION
 A2.1 AREA CALCULATIONS SCALE: 3/16" = 1'-0"

Bluewater Pools GR
1600 Lake Michigan Dr
Grand Rapids, Michigan

Do not scale drawings
 Use indicated dimensions
 In Charge **MJB**
 Checked **MJB**
 Date **12/4/21** Issued for **REVIEW**
3/4/22 **REVIEW**
5/5/22 **REVIEW**

Project Number
2021-01-14
 Sheet
A2.2

C:\Users\MikeB@lisa\The Design Forum Inc\Clients - Files\First Companies\2021-01-14 Bluewater Pools, 1600 Lake MI Dr\design\architectural\Sheets\A2.2 Material and Glass Calculation Elevations.dgn
 MikeB@lisa
 1:52:23 PM
 5/5/2022